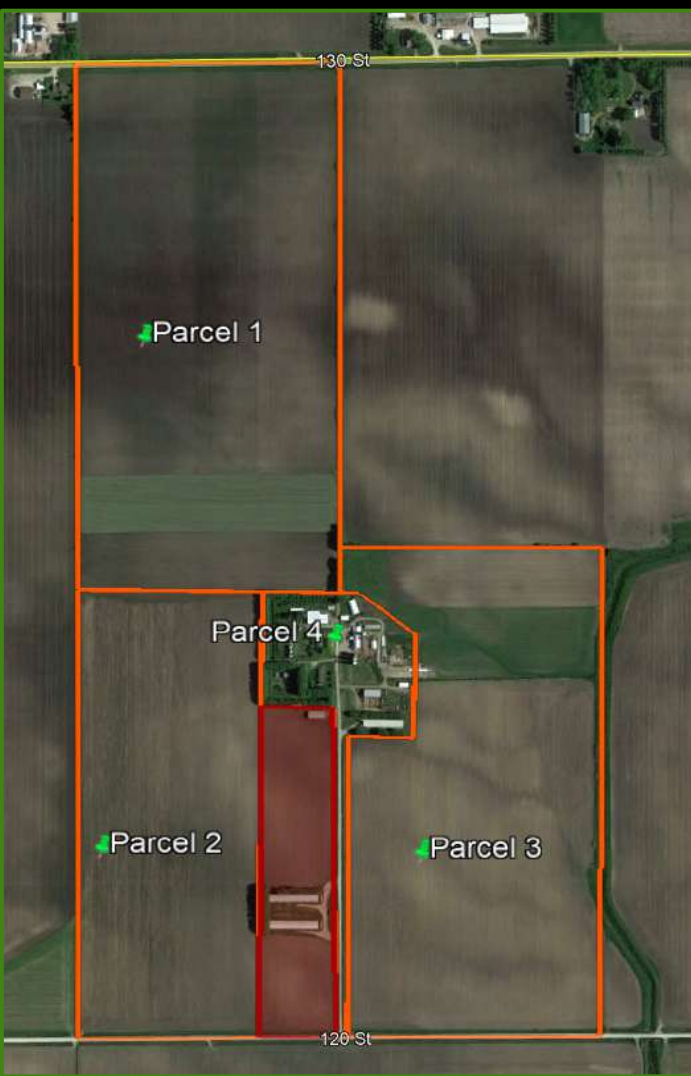


LIVE FARMLAND AUCTION

227 +/- ACRES

62500 120TH ST, ADAMS, MN 55909

MOWER COUNTY



MARCH

7

10:00 AM



David Gaskill Trust - Jeri Severson Trustee

ONLINE
BIDDING
AVAILABLE!

PROPERTY DESCRIPTION

Here is your chance at a great investment opportunity or to add more acres to your farm. This 227 +/- acre farm is being offered in 7 parcels (4-Tracts). With 87.36 acres of farmland, parcel 1 offers a CPI of 85.9. Parcel 2 consists of 51 acres of farmland with a CPI of 85. Next is parcel 3 containing 75.1 acres of farmland with a CPI of 89.6. The building site makes up parcel 4 with a 1980 1,764 sq. ft. home, 52x104 shed, dairy barn, hog confinement building, 5 silos, hoop barn, & other outbuildings sitting on 14 acres. Parcels 5, 6, & 7 are combination options of the preceding parcels. Call Agent for more info!

OPEN HOUSE

FEBRUARY

28

4:00-6:00 PM



Terms:
1% Buyers Premium
\$20k down per parcel

PARCEL DESCRIPTION

- Parcel 1: NW Corner 87.36 +/- Acres; CPI 85.9
- Parcel 2: SW Corner 51 +/- Acres; CPI 85
- Parcel 3: SE Corner 75.01 +/- Acres; CPI 89.6
- Parcel 4: Building Site 14 +/- Acres; CPI 84.5
- Parcel 5: Combo of P3 & P4 (89.01 +/-); CPI 88.8
- Parcel 6: Combo of P2, P3, & P4 (140.01 +/-); CPI 87.4
- Parcel 7: Combo of All Parcels (227.37 +/-); CPI 86.8

AUCTION LOCATION: American Legion 321 W. Main St. Adams, MN

Directions: Go west of Adams, MN on Hwy 56. Turn left on 640th Ave. Go South to 120th St. Turn right and go approx. 1.5 miles. The property is on the North side of the road. (Or North of Stacyville, IA 7 Miles to 120th Street)

See Website for More Info-
daviscornersauctionservice.com/realestate



DAN HERSHBERGER

Licensed in IA & MN

319-240-9984

dan@propconnections.com

Midwest Property Connections, LLC
1104 S. 4th Ave, Albert Lea, MN 56007
Broker Amy Willet- MN & IA



MLS